

ENTREPRENEURSHIP EXCHANGE PROGRAM

In Collaboration with ESADE Ramón Lull University in Barcelona

TARGET GROUP

TUM School of Management Bachelor students with interest in *Innovation and Entrepreneurship*

SCOPE OF PROGRAM

TUM students will get the opportunity to do an off-campus internship at a startup company in Barcelona, whilst undertaking courses in the area of Entrepreneurship at ESADE. This program supports ESADE and TUM students who wish to develop both their entrepreneurial and intercultural competencies.

EXPECTED QUALIFICATION

- official EEP certificate
- transcript of records from ESADE Business School
- reference from a Barcelonean start-up company

LANGUAGE OF INSTRUCTION

English (C1) / basic proficiency in Spanish preferable

APPLICATION SEMESTER

B.Sc. students can apply earliest in their 3rd semester

REQUIRED DOCUMENTS

- Current Transcript of records
- Abitur / Baccalaureate / A level certificate
- CV including personal statement, qualifications and other skills (in English)
- DAAD Language Test English or equivalent (C1, no older than 2 years)
- Optional: DAAD Language Test in Spanish or equivalent
- Matriculation certificate
- Pre-register [here](#)

NUMBER OF PLACES

5

LENGTH OF STAY ABROAD

20 weeks (Sep – Jan)

APPLICATION DEADLINE

02nd December 2024 for program start in Sep 2025



APPLICATION

After your online pre-registration, send your application documents via email to jip@mgt.tum.de

Subject line: **APPLICATION FOR EEP_ESADE_“your name”**

You will receive confirmation via email, at the latest on the next business day after the final application date. It is not possible to submit further documents after the application deadline.

SELECTION PROCESS

The application process consists of two parts: the pre-selection and an interview.

1. The pre-selection is based on the submitted documents.
2. Afterwards, you will receive an invitation to an interview or a letter of rejection.

Additional application for the exchange program "[TUM SOMex \(incl. Erasmus\)](#)" is possible.

In the case of successful nomination for the Entrepreneurship Exchange Program the application for the "TUM SOMex (incl. Erasmus)" is automatically annulled.

Please be aware that a participation in this program may extend your study at TUM!

Jointly with the respective Program Manager, it is the student's responsibility to determine whether and how this exchange matches the student's degree plan and whether the courses taken may be recognized for the TUM degree.

Participating in this Joint International Program meets the prerequisites to register for the examination in the module "International Experience" (B.Sc. (Munich)) 3 ECTS.

PROGRAM ELEMENTS (subject to change)

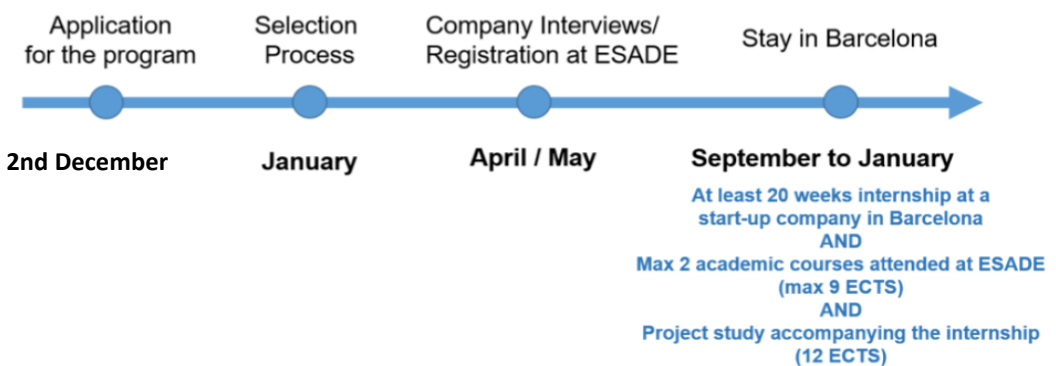
- Internship at a startup company in Barcelona and Business Start-up Case (in sum equivalent for Project Studies: 12 ECTS)
- Participation in business related courses at ESADE (in sum 8-9 ECTS)

CREDIT TRANSFER

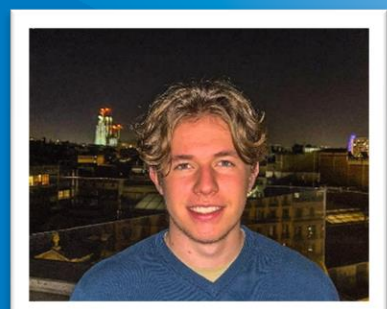
8-9 ECTS for max 2 courses and 12 ECTS for the module equivalent for Project Studies at TUM. Please note that the described courses are tentative and may be subject to change.

ESADE	TUM
Module equivalent for Project Studies 12 ECTS internship-based and accompanying the internship	Project Study at TUM 12 ECTS
Max. two of the following courses (max. 8-9 ECTS, class-based, subject to change)	Elective in Management & Technology (BMT) Management & Technology (BSMT) Each course 4 (5) ECTS Max. 2 courses = 8-9 ECTS

TIMELINE



“Between working in a highly dynamic startup, having innovative courses at ESADE and meeting inspiring personalities through student clubs, the EEP offers the perfect foundation for future entrepreneurs looking to make an impact while enjoying the Mediterranean lifestyle.”



GLEB MOROZOV
Bachelor's degree, Entrepreneurship Exchange Program

COSTS

Financial compensation for the internship is not guaranteed and depends on the company. We recommend applying for an Erasmus scholarship with support from our office.

CONTACT

If you have any questions don't hesitate to contact us via [mail](#).

You can find more information on the [website](#).

Program Coordinator: Ms. Miriam MAHLER & Ms. Karin BURKART

FAQs

Where can I take the DAAD Test in English?

Our Language Center offers the DAAD Test in English at regular intervals, free of charge. The dates can be found [here](#).

When should I apply for the program?

3rd semester and upwards.

Can I receive an ERASMUS grant?

If, to date, you have not yet received an ERASMUS grant (SMP) in your second circle of study (Master's Program), then after successful nomination, you can apply for the ERASMUS grant via the TUM MGT International Office.

Can I apply simultaneously for TUM SOMex and EEP?

Yes, you may apply for both programs. However, if you are nominated for the program and accept it, your application for TUM SOMex will be annulled.

Can I apply for another Joint International Program simultaneously?

Yes, you may apply for several of our programs; however, you will only be accepted for one.

Can I apply if I have already completed my project studies?

Yes, you may still apply; however, it is not recommended as you cannot have it recognized again but will be obligated to complete it successfully.

Do I need a language certificate in English?

Yes, you need proof of English proficiency in C1 or higher. If you do not have a recent one (not older than 2 years), please visit [TUM language center](#).

Last update: July 2024

