

ENTREPRENEURSHIP EXCHANGE PROGRAM

In Collaboration with the NUS Overseas Colleges (NOC) in Singapore

TARGET GROUP

TUM School of Management Bachelor and Master students with interest in Innovation and Entrepreneurship.

SCOPE OF PROGRAM

TUM students will get the opportunity to do an off-campus internship at a startup company in Singapore, whilst undertaking courses in Management at NUS. With this program, NUS and TUM support students who wish to develop both their entrepreneurial and intercultural competencies.

EXPECTED QUALIFICATION

- official EEP certificate
- transcript of records from NUS
- reference from a Singaporean start-up company

LANGUAGE OF INSTRUCTION

English

APPLICATION SEMESTER

- B.Sc. students can apply at least in their 3rd semester
- M.Sc. students in their 1st or 2nd semester

REQUIRED DOCUMENTS

- Current Transcript of Records
- for Master students: Bachelor Degree
- Abitur / Baccalaureate / A level certificate
- CV including motivational letter, qualifications and other skills (in English) → use the [CV TEMPLATE](#)
- DAAD Language Test English or equivalent (C1, no older than 2 years)
- Matriculation certificate
- Pre-registration [here](#)

NUMBER OF PLACES

15

LENGTH OF STAY ABROAD

Jan. – Jun. 2026

APPLICATION DEADLINE

May 15, 2025



APPLICATION

After pre-registering online, send your application documents via email to jip@mgt.tum.de
Subject line: **APPLICATION FOR EEP_NUS_“your name”**

You will receive confirmation via email, at the latest on the next business day after the final application date. It is not possible to submit further documents after the application deadline.

SELECTION PROCESS

The application process consists of two parts: the pre-selection and an interview.

1. The pre-selection is based on the submitted documents.
2. A rejection or an invitation to an interview will be sent to the candidates.

Please be aware that a participation in this program could extend your study at TUM!

Together with your Study Program Manager, it is your responsibility to determine if the exchange schedule matches your degree plan.

PROGRAM ELEMENTS (subject to change)

- Internship at a startup company in Singapore (at least five months) and Business Start-up Case (in sum equivalent to Project Studies: 12 ECTS)
- Participation in one business related course at NUS (6 ECTS)

CREDIT TRANSFER

Option for Bachelor Students (18 ECTS):

6 ECTS (4 NUS credits) for the course ETP4212 and 12 ECTS (8 NUS credits) for TR3203. Please take note that the described courses are tentative and subject to change.

NUS	TUM
TR3203 Business Start-up case 8 NUS credits = 12 ECTS Internship-based	Project Study at TUM 12 ECTS
ETP4212 New Venture Creation 4 NUS credits = 6 ECTS Class-based	Elective in B.Sc. ("wirtschaftswissenschaftlich-technisches Wahlfach")

Option for Master Students (18 ECTS):

6 ECTS (4 NUS credits) for the course ETP5331 and 12 ECTS (8 NUS credits) for TR3203. Please take note that the described courses are tentative and subject to change.

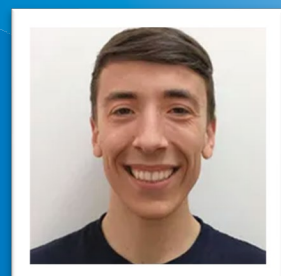
NUS	TUM
TR3203 Business Start-up case 8 NUS credits = 12 ECTS Internship-based Plus five additional pages individual reflection of the project	Project Study at TUM 12 ECTS
ETP5331 Intellectual Property 4 NUS credits = 6 ECTS Class-based Other courses subject to availability	Elective in M.Sc. ("wirtschaftswissenschaftlich-technisches Wahlfach")

TIMELINE



At least 22 weeks internship at a Singaporean start-up company
AND
18 ECTS for courses attended at NUS

“I gained so much knowledge and experience from my internship in a Singaporean startup. I also had the opportunity to join events with like-minded people through the NOC community and extend my skills in Entrepreneurship through courses at NUS.”



NICO SCHLOSSER

Bachelor's student, Entrepreneurship Exchange Program

COSTS

- Journey to and from Singapore: 800 – 1,500 €
- Personal and living expenses (incl. accommodation and food): ~1,000 €/month (option to live on NUS campus)
- Additional costs for individual plans

Financial compensation is not guaranteed and depending on the company.

CONTACT

If you have any questions don't hesitate to contact us via [mail](#).

You can find more information on the [website](#).

Program Coordinator: Karin BURKART (she/her)

FAQs

When should I apply for the program?

In the 3rd semester or later for B.Sc. students and in the 1st or 2nd /3rd semester for all TUM School of Management Master's Programs.

Can I apply simultaneously for TUM SOMex and EEP?

Yes, you may apply for both programs. However, if you are nominated for the program and accept it, your application for TUM SOMex will be annulled.

Can I apply for another Joint International Program simultaneously?

Yes, you may apply for several of our programs; however, you will only be accepted for one.

Can I apply if I have already completed my project studies?

Yes, you may still apply; however, it is not recommended as you cannot have it recognized again but will be obligated to complete it successfully.

Do I need a language certificate in English?

Yes, you need proof of English proficiency in C1 or higher. If you do not have a recent one (not older than 2 years), please visit [TUM language center](#).

Where can I take the DAAD Test in English?

Our Language Center offers the DAAD Test in English at regular intervals, free of charge. The dates can be found [here](#).

Last update: March 2025

