

QTEM



TUM School of Management  
Technical University of Munich



# Join the Global Analytics Network

QTEM

Using analytics  
to create a better world



# QTEM, the global network involving more than 20 outstanding ranked business schools and universities worldwide



**15**  
countries

**4**  
continents





# QTEM program offer:



Gain  
**Quantitative  
and analytical** skills

- GMAT test (for admission)
- Quantitative courses at home and abroad in specific modules
- Data Science training



Get  
**In-field experience**  
Access the network's  
Corporate Partners

- Activities with QTEM Corporate Partners
- Internship 6 -8 weeks
- QTEM Data Challenge



**Discover the world**  
Up to two semesters abroad at  
QTEM Academic Partners

- 1 or 2 exchanges and/or other international exposure
- Be part of the QTEM community
- Multicultural collaboration training

✓ **Global Business Analytics Challenge (GBAC)**

Earn the QTEM  
Certificate  
together  
with your TUM  
**Master's Degree**



# Specialize in top analytical fields

↓ During your Master's in "Management and Technology", you can access exclusive courses at TUM and our QTEM partner universities in these different modules



Applied  
Economics  
& Public Policy



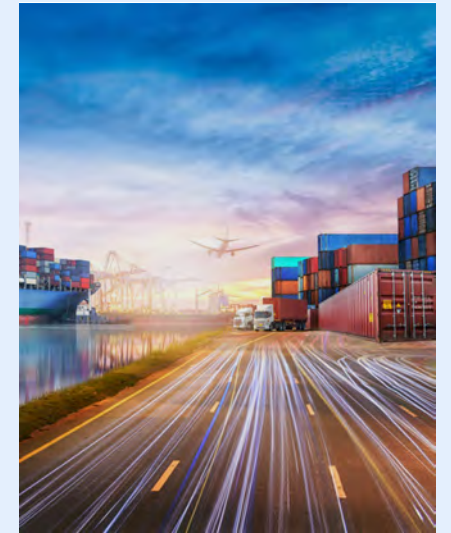
Business  
Intelligence  
& Big Data



Finance & Risk  
Management



Innovation  
& Strategy



Marketing  
& Supply Chain

# Meet our Corporate Partners through QTEM exclusive activities



In house  
classes/visits



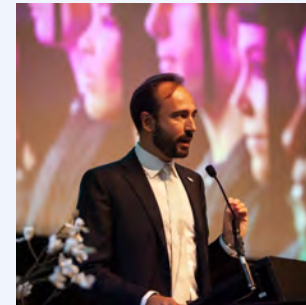
Job Fairs  
& academic  
events



QTEM Data  
Challenge



Company  
in the  
Classroom



Conferences



Online  
webinars



Job offers

## Our Partners →

Cartier

Deloitte

ENGIE

EY  
Building a better  
working world

Gjensidige

KEYROCK

McKinsey  
& Company

Millennium  
bcp

optiver

ORTEC  
OPTIMIZE YOUR WORLD

Q8

Reacfin

Santander  
Universitäten

Bright Foundation  
ENABLING AND RESTORING WORK TALENTS

BritishRedCross



# Learn by doing, the quantitative internship

- ✓ 6-8 weeks internship
- ✓ Quantitative focus
- ✓ Home or abroad
- ✓ At a QTEM Corporate Partner or any other company / institution



Kim Heijlighen  
Tilburg University  
QTEM 2019 alumna

“

My internship at EY was the ideal opportunity to get firsthand experience in the consulting field. Not only did I obtain useful knowledge and experience academically and professionally but was also an amazing social experience

”

# More than 50% of QTEM Academic Partners are Triple Crown accredited

## Triple-Crown accreditation





# Compete in the QTEM Data Challenge (GBAC)

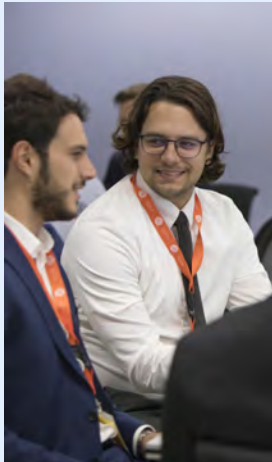
An applied data-driven consultancy project

International groups of 3-4 QTEM students supported by international coaches/experts from Corporate and Academic worlds

Interact with the Company providing the real data set

Apply your analytical skills to solve a complex business case

Deliver your Conclusions to a jury of academic and corporate experts





# Summary of the different parts of the QTEM program



# The selection process at TUM School of Management



TUM School of Management  
Technical University of Munich

15 spots  
per academic year available

The following Master's program  
give access to QTEM

Earn the QTEM certificate  
together with the Master's  
Degree from TUM in:

- Master in Management & Technology



GMAT is a compulsory  
entry pre-requirement:

$\geq 605$   
(GMAT Focus Edition)

student meets  
the common  
acceptance pre-  
requisite for QTEM

$555 < 595$   
(GMAT Focus Edition)

student can be  
considered for  
QTEM if s/he has  
an exceptional file

Overall selection criteria at TUM:

- Academic excellence
- English proficiency
- Quantitative proficiency
- International experience
- Professional/ extra-curricular experience
- Interview with the QTEM Dean





# Your QTEM experience in your MMT

## Minimum 45 ECTS quantitative credits in MMT

	1st semester (30 ECTS)	2 <sup>nd</sup> semester (30 ECTS)	3rd semester (30 ECTS)	4th semester (30 ECTS)	Possible 5th semester
Courses at home + exchanges	TUM	TUM	Exchange at a QTEM Academic Partner	TUM	(e.g. Participation in a 2 <sup>nd</sup> exchange semester)
	Electives / Specialization in Management (15 ECTS) Specialization in Technology (15 ECTS)	Electives / Specialization in Management (15 ECTS) Specialization in Technology (15 ECTS)	Electives or Specialization in Management (30 ECTS)	Master's Thesis (30 ECTS)	
	+				
GBAC	2 trainings + QDC	OR 2 trainings + QDC	OR 2 trainings + QDC	OR 2 trainings + QDC	
	*Students can decide in which term to carry out the 2 online trainings followed by the QTEM Data challenge				
	+				
Internship	Internship				OR Internship



## Graduation

# Joining us

## The application process and selection timeline

Please scan the code for further information on the application process at TUM School of Management



15 May



Deadline to submit your application to TUM School of Management

1. Registration for application via Forms: [Online registration](#)
2. Application via e-mail to [qtem@mgt.tum.de](mailto:qtem@mgt.tum.de)
  - Bachelor Degree
  - Current Transcript of Records (for students from the Bachelor's program in Management and Technology in their last Bachelor's semester)
  - 5 preferences from QTEM Partner Universities (specified in "application registration" link)
  - A list of courses and results with quantitative contents taken at TUM School of Management (min 30 ECTS) **OR**
  - GMAT (or GRE) 650 and higher (taken within the last 3 years) / GMAT Focus Edition 605 or higher
  - Abitur / Baccalaureate / A level certificate
  - English certificate (C1 or higher) or equivalent (no older than 2 years)
  - Letter of motivation in English (max. 1½ pages)
  - CV
  - Matriculation certificate



2 - 3 June

Interviews of QTEM applicants

30 June

Final list of QTEM candidates is confirmed by QTEM Central

20 September

Deadline to submit GMAT/GRE test score to QTEM Central

January 25

The (first) QTEM exchanges begin...



**Joining us**  
**Decision making support**



**<https://www.qtem.org/>**



<https://qtem.org/your-exchange-destinations/academic-year>



<https://qtem.org/courses-overview>

## Find a Course

QTEM offers challenging courses in the latest techniques for quants, economics, and management at leading universities around the globe.

[Course Quant Rating](#) [Rule for course selection](#)

University:

Semester:

## Joining us

### How to get in contact with the TUM QTEM coordinators

**TUM School of Management - International Office 3<sup>rd</sup> floor**  
(room 3550) student hub

**Contact persons:**

Program Coordinator: Ms. Josephina BUHR

Program Manager: Ms. Ute HELFERS

**Office hours:** Wednesday 10 am – 12 noon

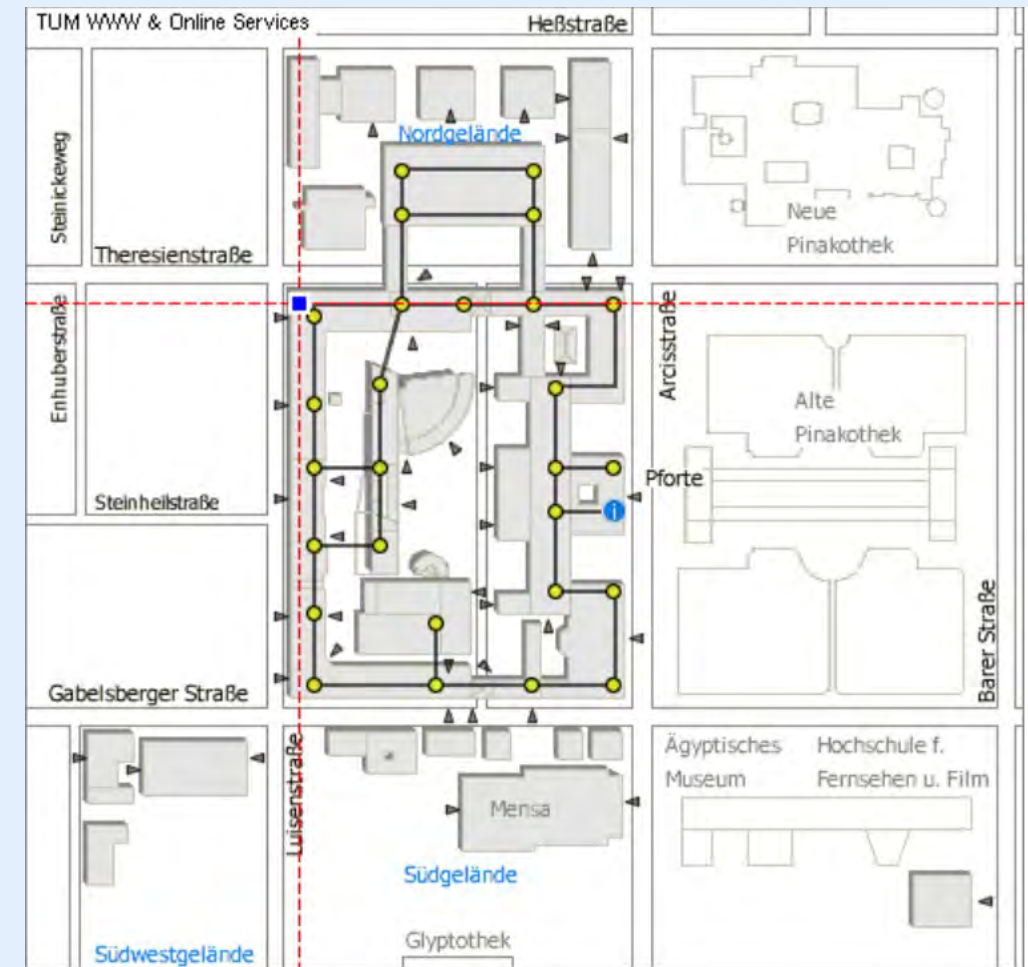
**Email:** [qtem@mgt.tum.de](mailto:qtem@mgt.tum.de)

**Telephone:** 089 289 25028

**Website:**

<https://www.mgt.tum.de/programs/international-exchange-programs/going-abroad/qtem>

<https://www.qtem.org>





QTEM

**TUM**  
TUM School of Management  
Technical University of Munich



# Thanks!

Join the QTEM  
community today

Questions?

**Application Deadline: 15 May 2025!**

Follow  
QTEM

